

PUNCH AND DIE

Hardened steel (56÷58 HRC).

BALL BEARING

HEXAGON NUT

Black-oxide and hardened steel.

THREADED PIVOT PIN

Hardened steel.

LOCKING NUT

Steel.

FEATURES AND APPLICATIONS

GN 123 sheet metal punch is a tool to execute door locks in locker doors made of 2 mm sheet steel.

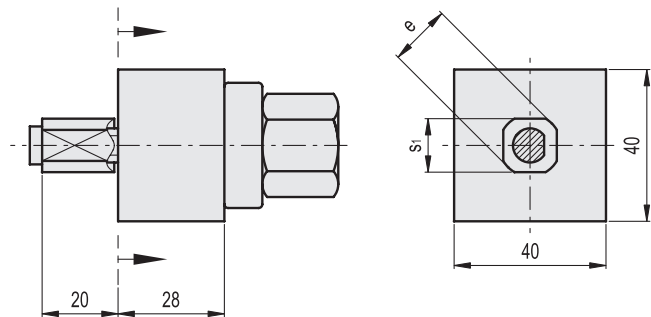
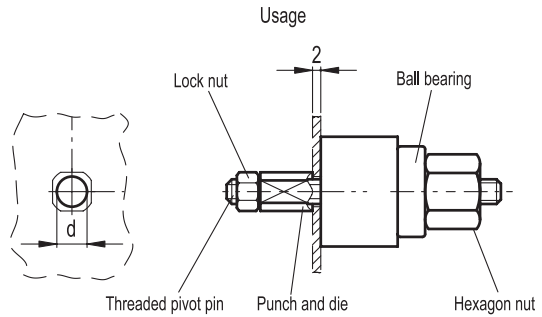
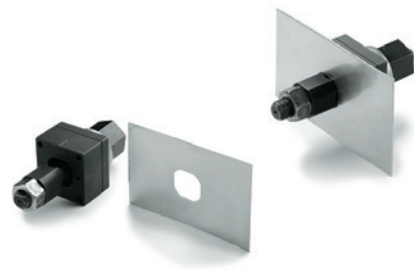
Before using the sheet metal punch, make a "d" hole according to the dimensions in the table, where a threaded pivot pin is inserted. Install the punch on its end and fit the counternut to lock it.

By turning the big hexagon nut on the opposite end, the puncher is activated and a punch on the metal sheet is produced.

Using a ball bearing located between the die and the hexagon nut allows to apply higher clamping force/torque, minimising friction between the nut and the die.

SPECIAL EXECUTIONS ON REQUEST

- Punches for different door locks.
- GN 123.5 punches for stainless steel sheet.



Conversion Table	
1 mm = 0.039 inch	
s	
mm	inch
20.1	0.79

Code	Description	s1+0.1	e+0.5	d	⚖️
GN.17301	GN 123-V20.1	20.1	22.5	15	505

METRIC

- 1
- 2
- 3
- 4
- 5
- 6
- 7
- 8
- 9
- 10
- 11
- 12
- 13
- 14
- 15
- 16
- 17
- 18

Latches